

# CD200D

## 12–24 VDC POWERED IGNITION SYSTEMS

- n **Universal, low-cost, microprocessor-based industrial systems for 8, 12 and 16-cylinder engines**
- n **Programmable configuration to select the feature set appropriate to the application**
  - Timing curves vs. RPM or analog signal
  - Selectable spark energy
  - Individual cylinder timing adjustment
  - Adjustable overspeed trip
- n **Comprehensive diagnostics for troubleshooting**
- n **Windows™-based terminal program for configuration and monitoring**
- n **Modbus RTU communications and monitoring**
- n **CSA-certified for Class I, Division 2, Groups C and D, T4 when used with shielded versions of harnesses and coils**
- n **Patented technology: U.S. Patent No. 5,623,209**

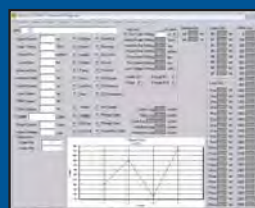
The Altronic CD200D ignition system is a high energy digital, capacitor-discharge system designed for use on 8, 12 and 16-cylinder industrial gas engines. Eliminating maintenance-intensive mechanical distributor ignition systems, the DC-powered CD200D features no moving parts, high-end control features, and operational flexibility across the range of suitable applications.



when used with shielded versions of harnesses and coils

Employing microprocessor technology in its design, the moderately priced CD200D unit processes angular position input signals from a magnetic pickup sensing drilled reference holes or protrusions. Alternatively, the CD200D also supports the use of a Hall-effect pickup with a magnet disc. This provides accurate and consistent ignition timing referenced directly to the engine's crankshaft or camshaft. Use of high energy, capacitor-discharge (C.D.) technology, proven in hundreds of thousands of natural gas engine applications worldwide, provides maximum engine performance and can often extend usable spark plug life by three to five times compared to an inductive ignition system.

A Windows™-based terminal program gives users access to the entire range of CD200D features, including adjustable output energy, automatic timing adjustment curves (based on RPM or an analog control input such as a load sensor), and the overspeed setpoint. Using this approach, the user can implement those specific features required for a particular application. This software package also displays the system primary and secondary discharge diagnostics. For simple use in the field, these same diagnostics are available to the local operator via a flashing LED on the unit. Remote communications and monitoring via Modbus-RTU are also standard.



Windows™-based Terminal Program for simple configuration.

# CD200D COMPONENTS

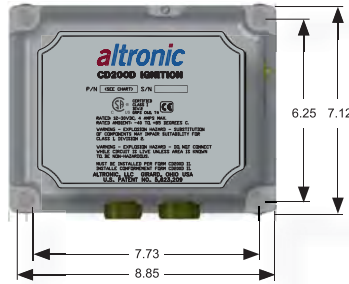
COMPONENT	UNSHIELDED SYSTEM	SHIELDED SYSTEM
CD200D Unit, 8-cylinder	791090-8	791090-8
CD200D Unit, 12-cylinder	791090-12	791090-12
CD200D Unit, 16-cylinder	791090-16	791090-16
Input Harness (MPU)	793106-4 (80"), 793106-7 (180")	793104-1
Input Harness (H-E)	793105-4 (80"), 793105-7 (180")	793103-1
Output Harness (791090-8)	793012-8 (180")	793015-8 (180"), 793023-8 (90°)
Output Harness (791090-12)	793012-12 (180")	793015-12 (180"), 793023-12 (90°)
Output Harness (791090-16)	793012-16 (180")	793015-16 (180"), 793023-16 (90°)
Magnetic Pickup	791015-1 (3/4"-16 x 1.9") 791016-2 (3/4"-16 x 3.4") 791035-2 (M12 x 2.5")	691118-1 (5/8"-18 x 1.75") 691118-2 (5/8"-18 x 2.50") 691118-3 (5/8"-18 x 3.00") 691118-4 (5/8"-18 x 4.50")
Magnetic Pickup Cables	Included in Input Harness above	593048 series (shielded 180°)* 593054 series (shielded 90°)*
Hall-effect Pickup	791050-1 (5/8"-18 x 1.75") 791050-2 (5/8"-18 x 2.50") 791050-4 (5/8"-18 x 4.50")	791050-1 (5/8"-18 x 1.75") 791050-2 (5/8"-18 x 2.50") 791050-4 (5/8"-18 x 4.50")
Hall-effect Pickup Cables	Included in Input Harness above	593052 series (shielded 180°)* 593057 series (shielded 90°)*
Ignition Coils	501061, blue (std. duration) 591010, red (long duration) 591040, black (long duration)	501061-S shielded** 591010-S shielded** 591007 integral coil 591011A integral coil 591011B integral coil 591011C integral coil

\* See the Altronic price list for available lengths.  
\*\* See the Altronic price list for available secondary leads.

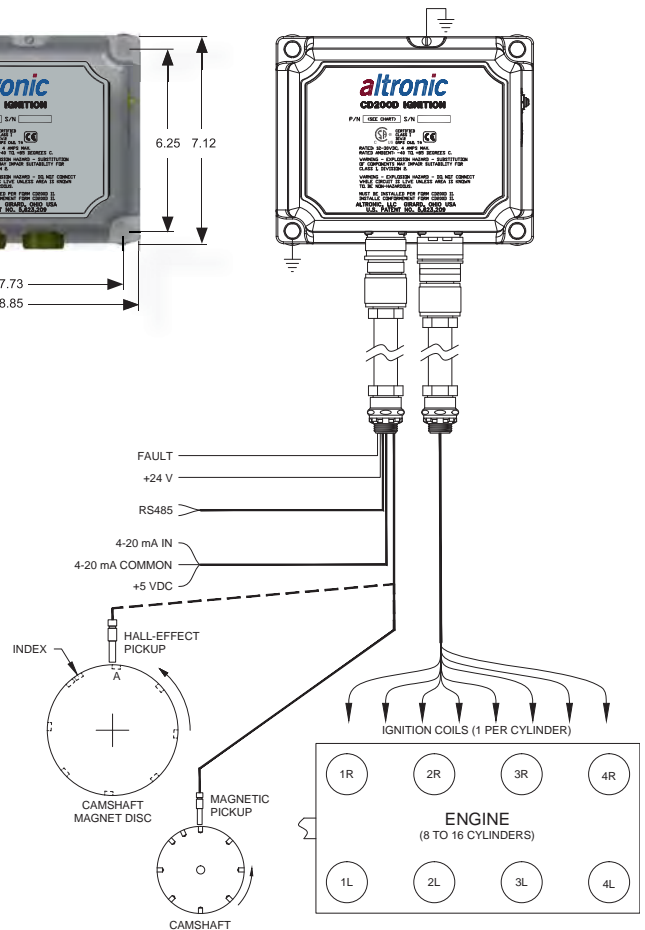
## Specifications

- No. of cylinders ..... 8, 12, 16
- Power required ..... 12Vdc, 3.5Amp  
24Vdc, 2Amp
- Max. voltage output ..... 40kV
- Spark duration ..... 300-600microsec.
- Timing adjustment:
  - Manual (8-pos. switch)..... user-selectable increments
  - RPM range..... 25 to 2,500RPM
  - Analog input range..... 4-20mA or 0-5Vdc
  - Overall max.timing range..... 25° of retard
- Overspeed setpoint range ..... 25 to 2,500RPM
- Output switch rating ..... 0.5Amp, 32Vdc max.
- Communications..... Modbus RTU (RS-485)

## Dimensions



## System Diagram



712 Trumbull Avenue, Girard, Ohio 44420  
(330) 545-9768 / Fax: (330) 545-9005  
Email: [altronic.sales@hoerbiger.com](mailto:altronic.sales@hoerbiger.com)  
Form CD200D 4-10 ©2010 Altronic, LLC