

DD-40NTV SERIES DIGITAL ANNUNCIATORS

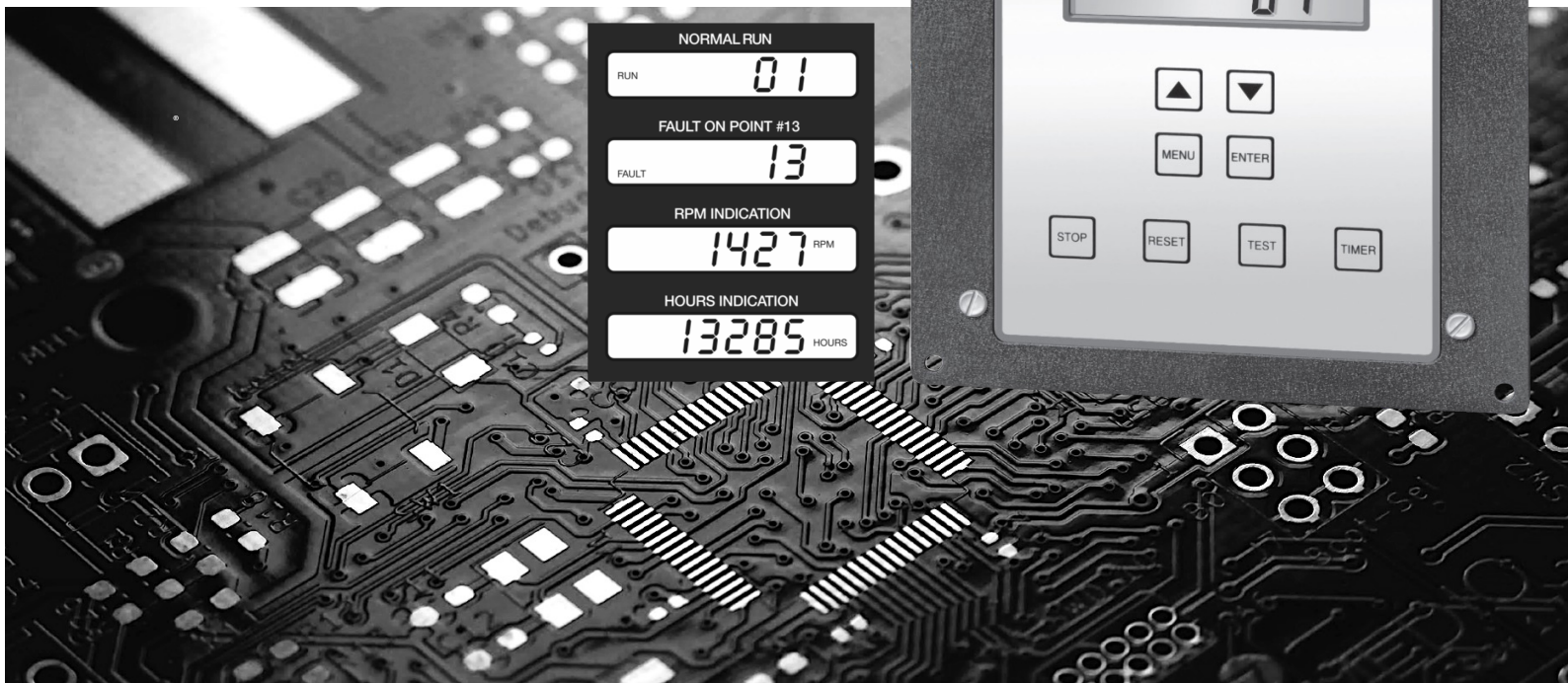
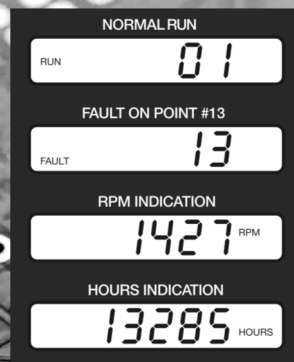
- Monitors up to 40 electrical N.O./N.C. contacts
- Built-in Tachometer / Hourmeter / Overspeed
- Displays ignition, DC and battery voltages
- Pre-lube and post-lube functions
- Powered from neg. ground C.D. ignition (120-400 V.) or 12-24 Vdc
- RS-232 / RS-485 ModBus communications
- CSA certified Class I, Division 2, Groups C & D

Altronic's industry standard annunciator, the DD-40NTV series monitors up to 40 electrical contacts that represent limits on critical operating parameters such as engine or process pressures, temperatures, levels, etc. Upon detection of a fault from one of the monitored points, the annunciator displays the corresponding 2-digit fault code for that point and generates an output signal (typically to close a fuel valve and ground the ignition).

The Altronic DD-40NTV annunciators include integral tachometer and hourmeter functions as well as overspeed protection adjustable from the front keypad. Other features include four configuration templates (two of which simulate the older DD-20NT and DD-40NT models), two programmed timers for class B points and a programmable delay of the second shutdown output after fault detection. The annunciator continues logic operation on the internal battery in the event the power becomes disconnected or fails.

The DD-40NTV series also provides a ModBus compatible, RS-232/RS-485 serial communications interface for connection to an RTU or PLC. When used with the 691200-3 power supply, additional features include readout of ignition, DC and internal battery voltages and pre-lube and post-lube functions.

A sealed membrane keypad and a powder-coated aluminum enclosure ensure maximum reliability in harsh and hazardous environments.



Specifications

Inputs – DD-40NTV-O	40 contacts N.O.
Inputs – DD-40NTV-U.....	40 contacts N.C. or N.O. (can be mixed)
Outputs	2 solid state, N.O./N.C., 400V., 0.5 amp
Power Requirement	C.D. ignition (neg. ground, 120V. min.) or 10-30 Vdc, 5 watts
Serial Communications	RS-232/RS-485 ModBus RTU
Scan Rate	5 times per second (all points)
Display	5-digit display, custom
Ambient Temperature Rating	-40°F. to +175°F. / -40°C. to +80°C.
Hazardous Area Classification	Class I, Div. 2, Groups C and D

Ordering Information

Annunciator Units

40-Point, normally open	DD-40NTV-O
40-Point, normally closed or open (or mixed)	DD-40NTV-U

Power Supply (see Power Requirement above)

Original power supply (for replacement use)	691200-1
Enhanced feature power supply (new applications)	691200-3

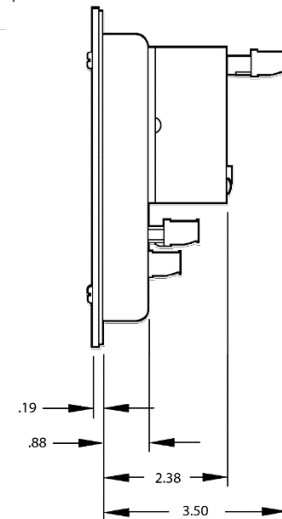
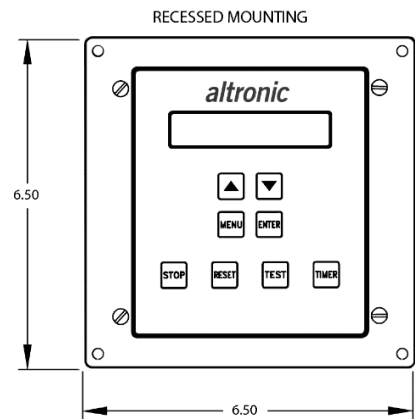
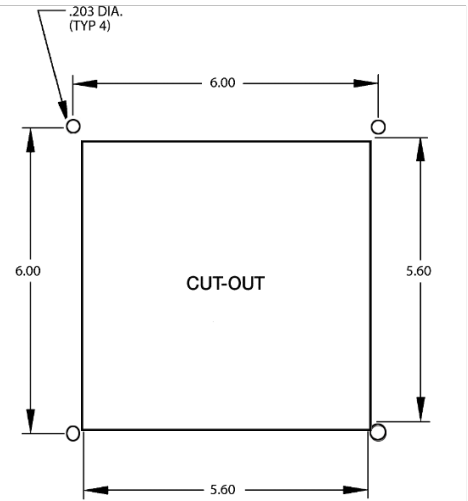
Terminal Module/Cable (DD-40NTV-U only)

Terminal Module (2 required)	672169-1
Cable – DB-25 (2 required)	693115-1

Accessories

Cable – RS232 (DB9)	693116-1
Converter, 110 Vac to 12 Vdc	690106-1
Converter, 220 Vac to 12 Vdc	690106-2
Solenoid valve, 2-way	690019-1
Solenoid valve, 3-way	690019-2

Dimensions



ALTRONIC

A Member of the HOERBIGER Group

712 Trumbull Avenue / Girard, Ohio 44420
 (330) 545-9768 / Fax: (330) 545-3231
 www.altronic-llc.com / Email: sales@altronic-llc.com

Form DD-NTV 8-22 ©2022 Altronic, LLC

