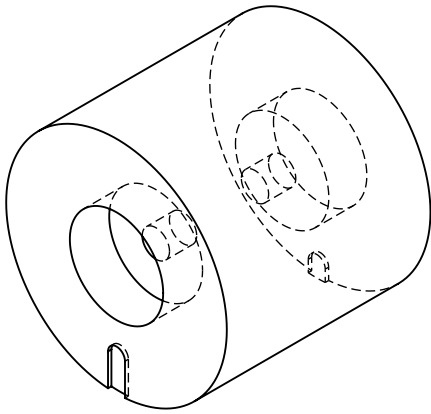
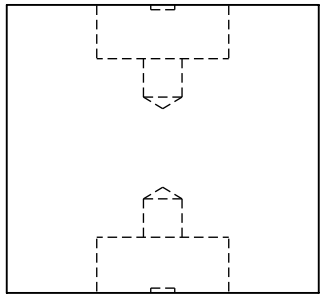


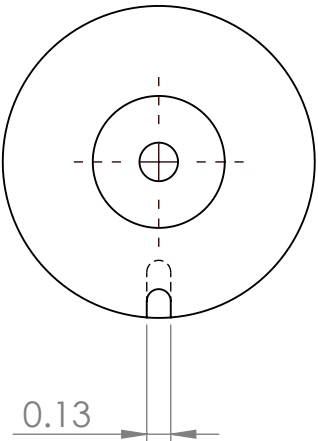
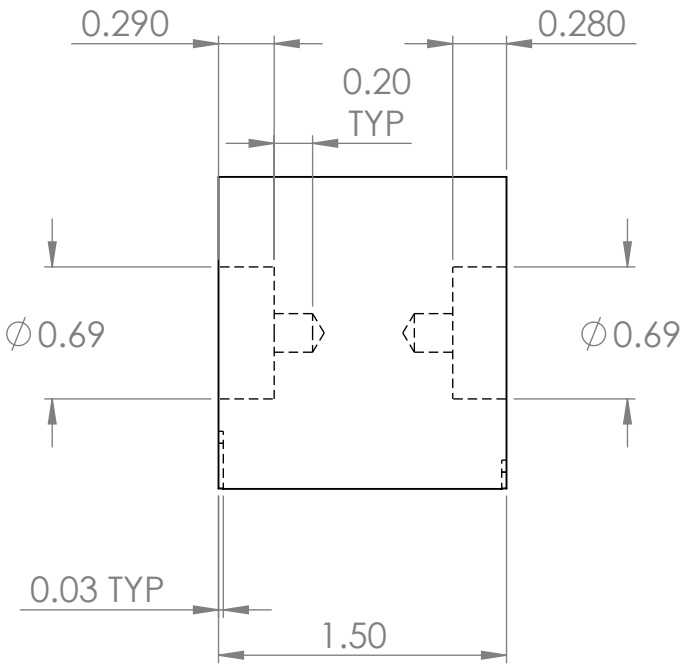
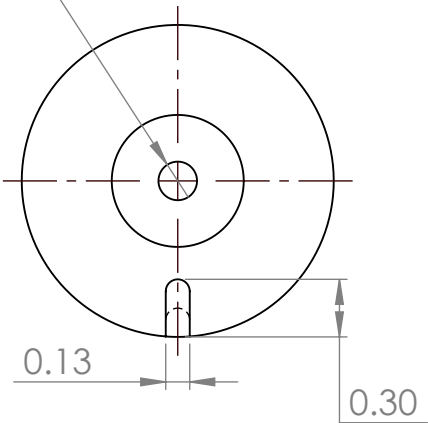
Service Tools - Self-Powered Ignition Systems

Service Tools 5-25

PART NO.	DESCRIPTION	SYSTEM
506022	Press distributor-rotor on bearing-shaft	Altronic III-NG
506101A	Press bearing-shaft into housing	Altronic I, III, III-NG, V, V-NG
506101B	Support main housing	Altronic I, V, V-NG
506101C	Support back cover	Altronic III, III-NG
506102B	Support bearing-shaft	Altronic I, V, V-NG
506102C	Press magnet-rotor on bearing-shaft	Altronic I, V, V-NG
506103A	Press bearing into back cover housing	Altronic V, V-NG
506103B	Support back cover housing	Altronic V, V-NG
506104A	Press shaft-rotor into front housing bearing	Altronic III, III-NG
	Press shaft into back cover bearing	Altronic V, V-NG
506104B	Support back cover bearing	Altronic V, V-NG
506104C	Support front housing bearing	Altronic III, III-NG
506104D	Press gear-end bearing on shaft-rotor	Altronic III, III-NG
	Press timer arm on back cover bearing-shaft	Altronic III
506104E	Support back cover bearing-shaft	Altronic III, III-NG
506105A	Press bearing into front housing	Altronic III, III-NG
506105B – pg. 1	Support front housing	Altronic III, III-NG
506105B – pg. 2	Support ring	
506108A	Drive coupling pin off and on	Altronic I, III, III-NG, V, V-NG

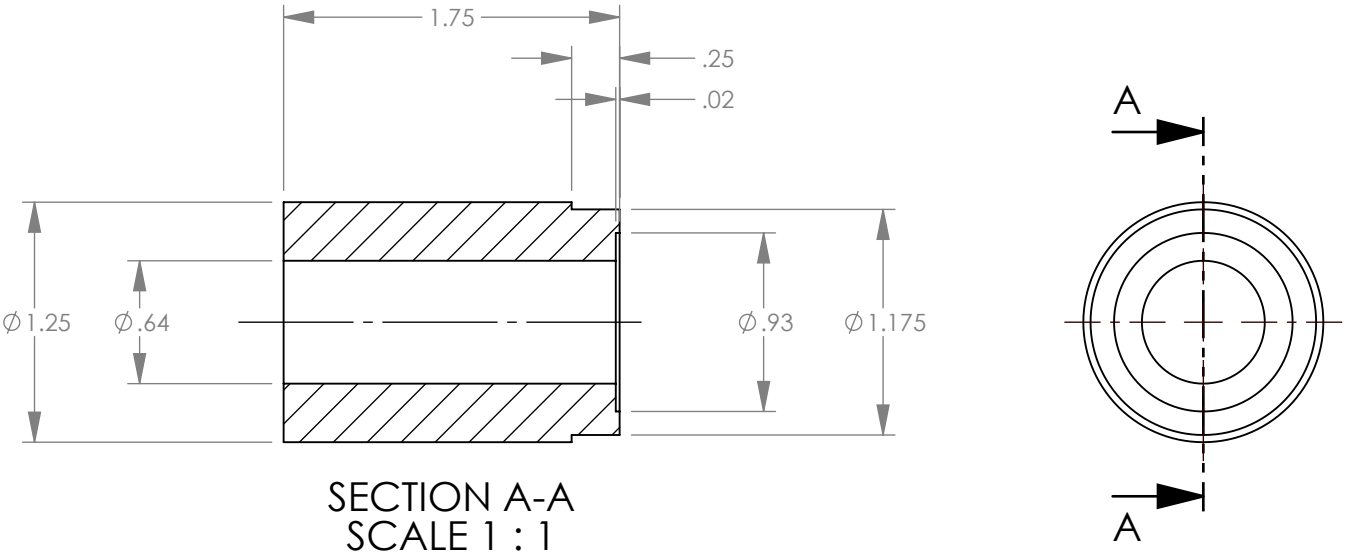


Ø 0.20 (#7 DRILL) ∇ 0.20
BOTH SIDES



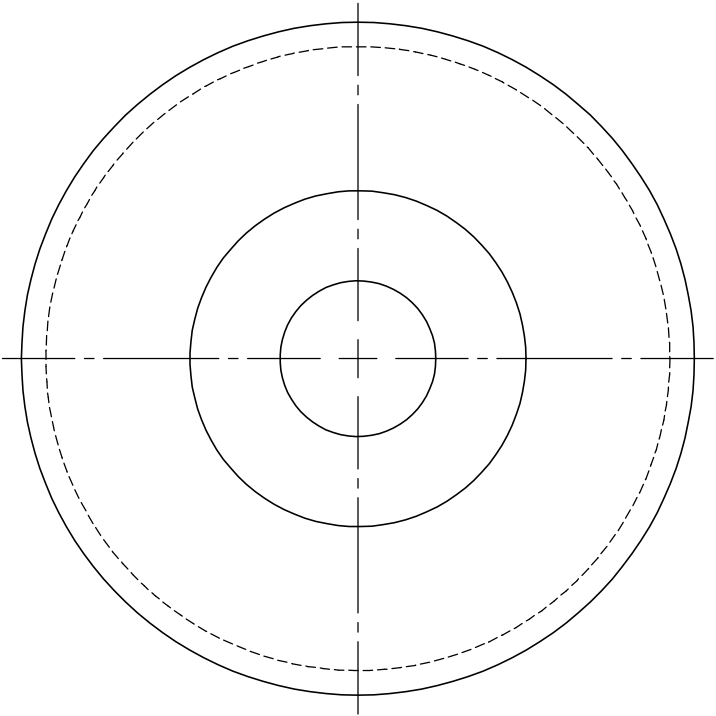
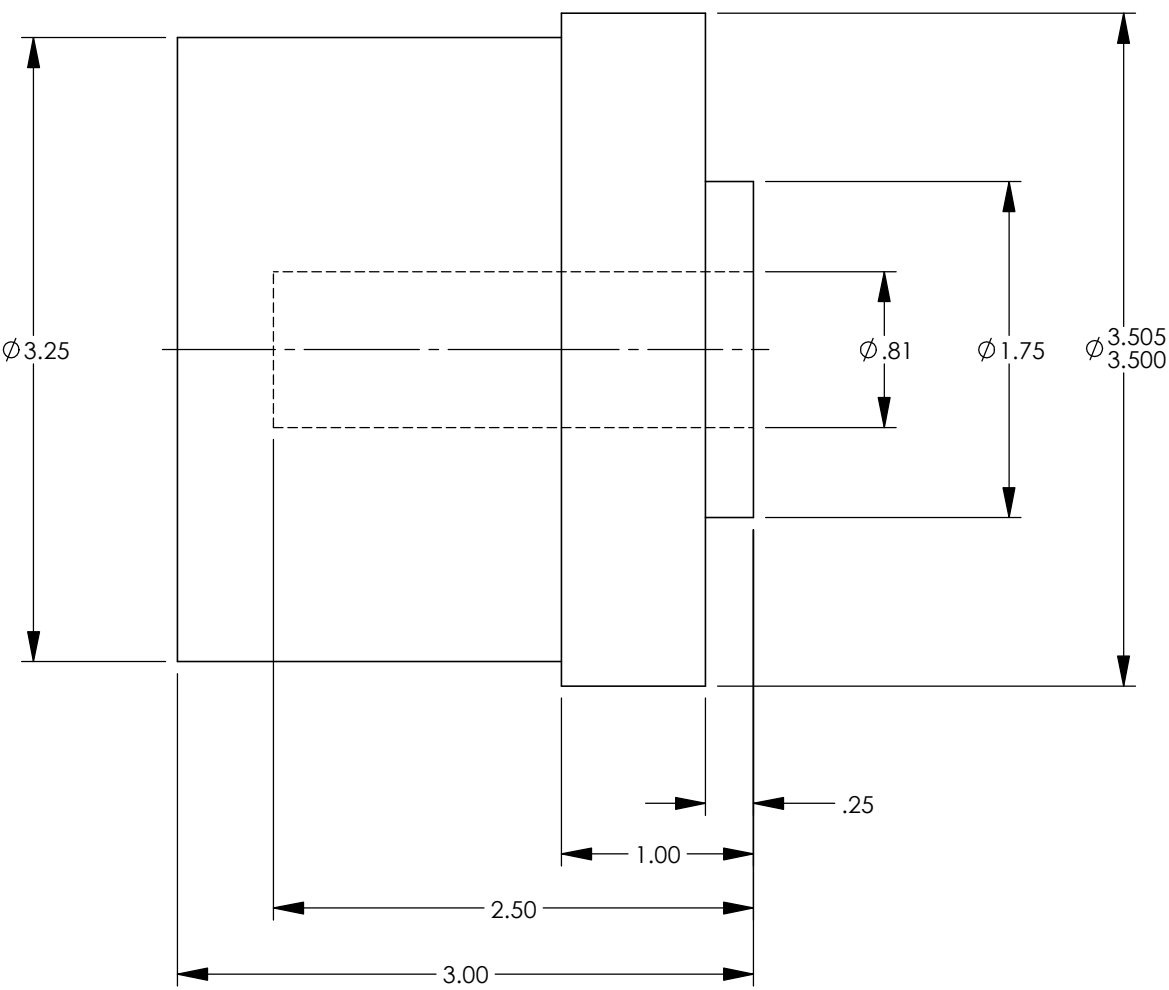
NOTES:
1. MATERIAL TO BE C.R.S.

REVISIONS				CONFIDENTIAL - Copyright Altronic, LLC All rights reserved. May not be copied in whole or in part without prior written permission from Altronic, LLC.	TOLERANCES (EXCEPT AS NOTED) UNITS IN INCHES (EXCEPT AS NOTED) INCHES: .xxx = ±.005 .xx = ±.010 MILLIMETERS: .xx = ±.13 .x = ±.3	ALTRONIC		
REV	DATE	BY	DESCRIPTION			TITLE MAGNET CUP PRESS TOOL		
						DRAWN BY	DAM	DATE 10-09-24
						CHECKED BY		DATE
						APPROVED BY		DATE
				SW	SCALE: 1:1	DRAWING NUMBER 506 022		



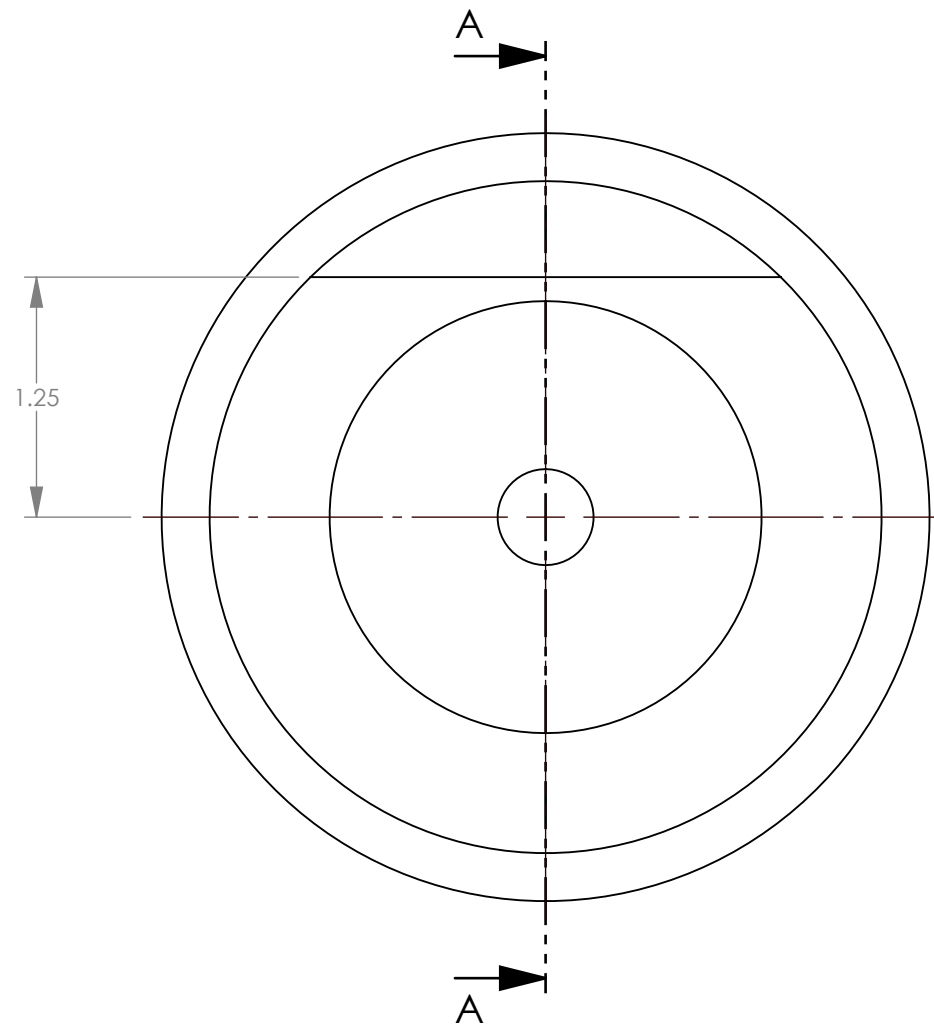
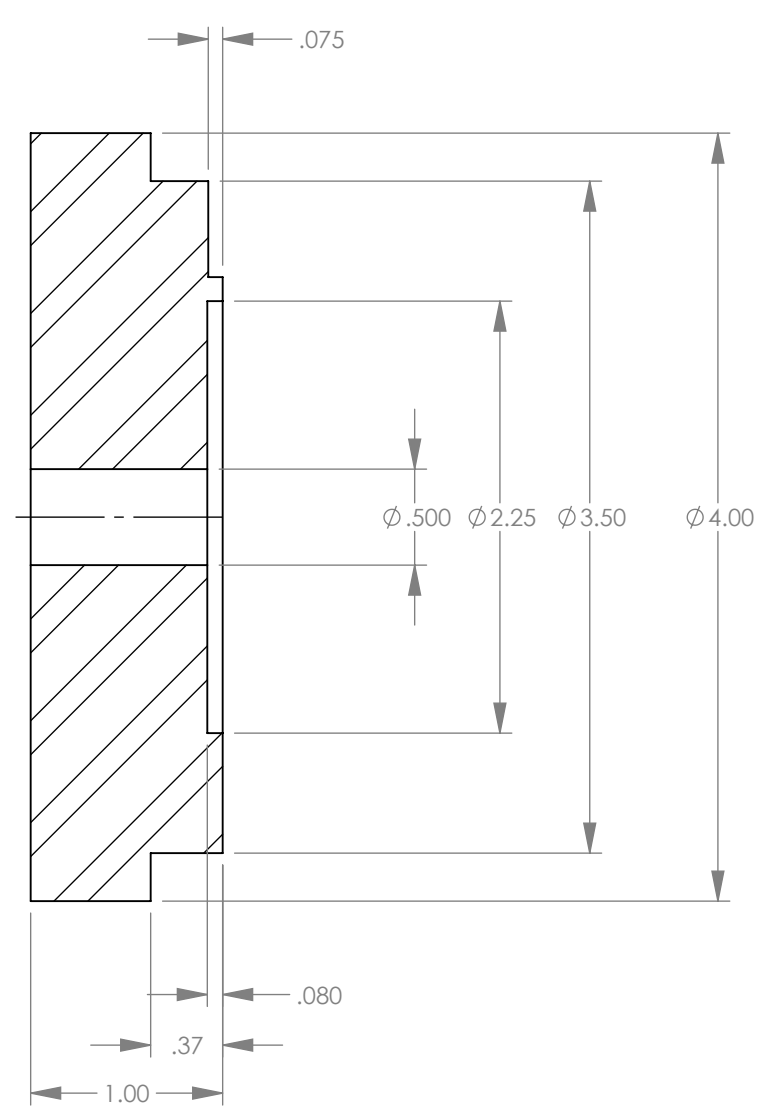
- NOTES:**
- 1. MAKE FROM: 810074.
 - 2. DEBURR ALL SHARP EDGES.

REVISIONS				CONFIDENTIAL - Copyright Altronic, LLC All rights reserved. May not be copied in whole or in part without prior written permission from Altronic, LLC.	TOLERANCES (EXCEPT AS NOTED)	Altronic		Drawn in Solidworks
REV	DATE	BY	DESCRIPTION		DECIMAL: .xxx = ±.005 .xx = ±.010	TITLE BEARING SHAFT PRESS TOOL (ALTRONIC I, III, V)		
1	10-13-17	WTP	ECN 170099		SCALE: 1:1	DRAWN BY WTP	DATE 9-8-86	DRAWING NUMBER 506 101A
						CHECKED BY	DATE	
						APPROVED BY	DATE	



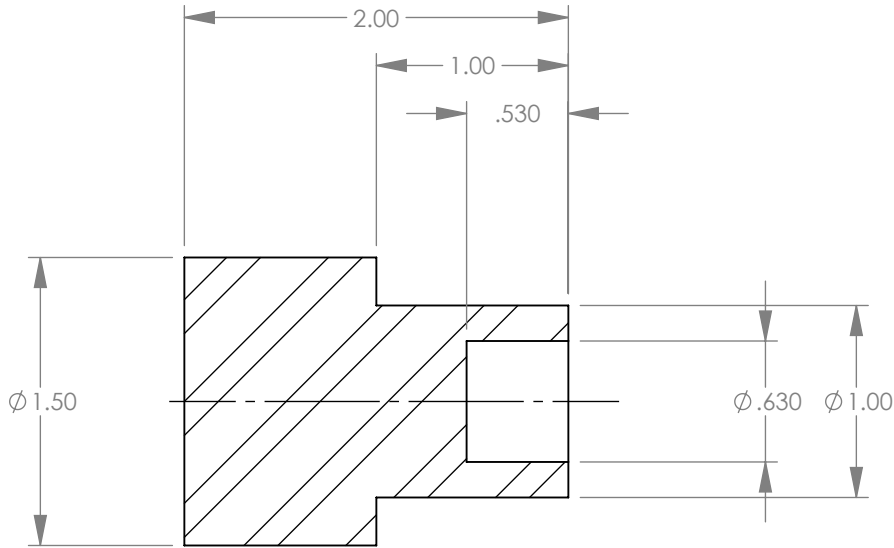
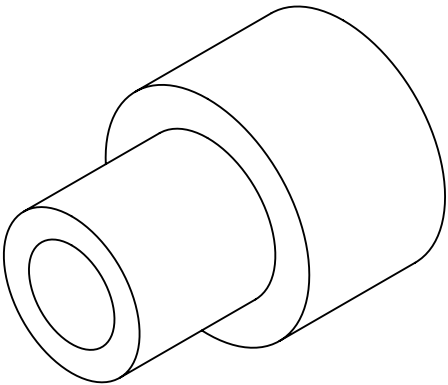
- NOTES:**
- 1. MAKE FROM: 810138
 - 2. DEBURR ALL SHARP EDGES.

REVISIONS				CONFIDENTIAL - Copyright Altronic, LLC All rights reserved. May not be copied in whole or in part without prior written permission from Altronic, LLC.	TOLERANCES (EXCEPT AS NOTED)	Altronic		Drawn in Solidworks	
REV	DATE	BY	DESCRIPTION		DECIMAL: .xxx = ±.005 .xx = ±.010	TITLE HOUSING SUPPORT TOOL (ALTRONIC I & V)			
1	10-9-17	WTP	ECN 170099			DRAWN BY WTP	DATE 9-10-86	DRAWING NUMBER 506 101B	
					CHECKED BY	DATE			
					APPROVED BY	DATE			
					SCALE: 1:1				

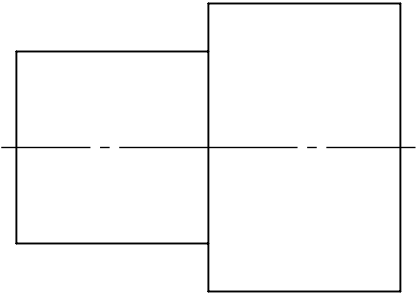
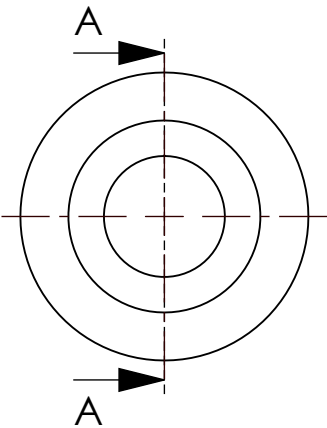


- NOTES:**
1. MAKE FROM: 810137.
 2. DEBURR ALL SHARP EDGES.

REVISIONS				CONFIDENTIAL - Copyright Altronic, LLC All rights reserved. May not be copied in whole or in part without prior written permission from Altronic, LLC.	TOLERANCES (EXCEPT AS NOTED)		Altronic		Drawn in Solidworks			
REV	DATE	BY	DESCRIPTION		DECIMAL: .xxx = ±.005 .xx = ±.010		TITLE SUPPORT COVER (ALTRONIC III)					
1	10-12-17	WTP	ECN 170099				DRAWN BY		WTP	DATE	9-10-86	DRAWING NUMBER
							CHECKED BY			DATE		506 101C
							APPROVED BY			DATE		

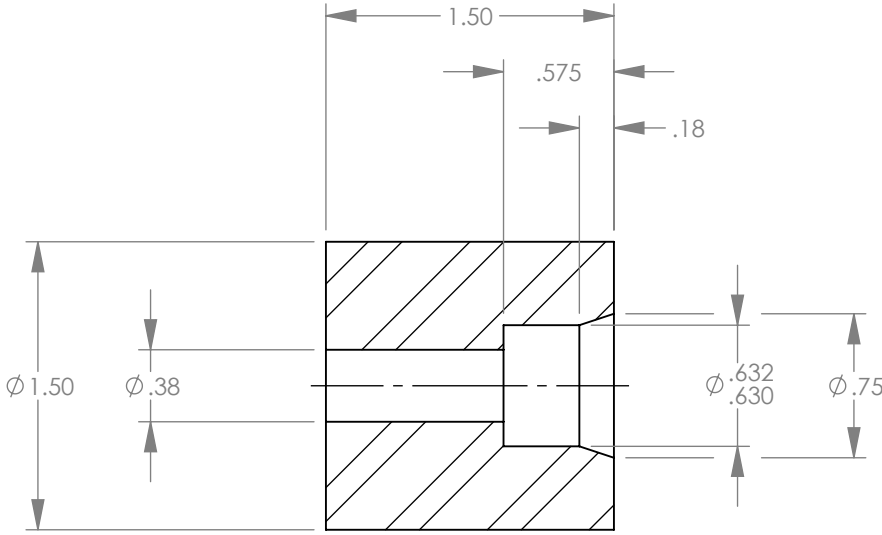


SECTION A-A

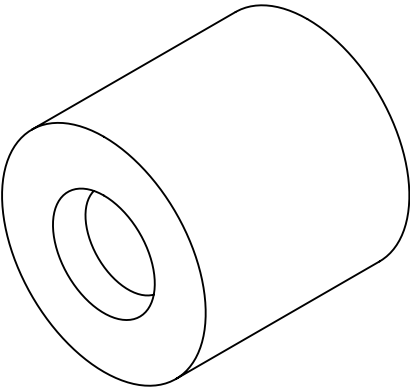
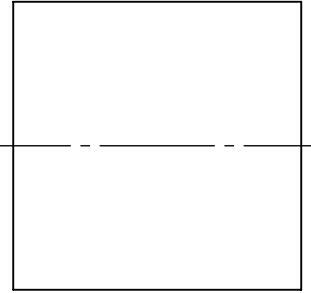
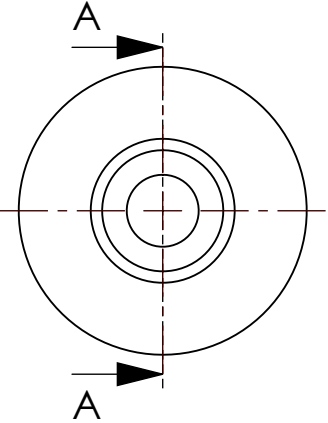


- NOTES:**
- 1. MAKE FROM 810139.
 - 2. DEBURR ALL SHARP EDGES.

REVISIONS				CONFIDENTIAL - Copyright Altronic, LLC All rights reserved. May not be copied in whole or in part without prior written permission from Altronic, LLC.	TOLERANCES (EXCEPT AS NOTED)	Altronic		Drawn in Solidworks
REV	DATE	BY	DESCRIPTION		DECIMAL:	TITLE		
1	1-23-18	WTP	ECN 180011; REDRAWN IN SOLIDWORKS		.xxx = ±.005 .xx = ±.010	SHAFT SUPPORT TOOL ALTRONIC I & V		
					SCALE:	DRAWN BY	WTP	DATE
					1:1	CHECKED BY		DATE
						APPROVED BY		DATE
						DRAWING NUMBER		
						506 102B		

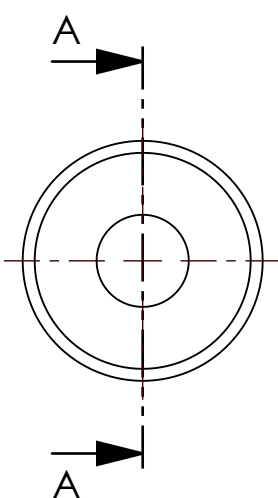
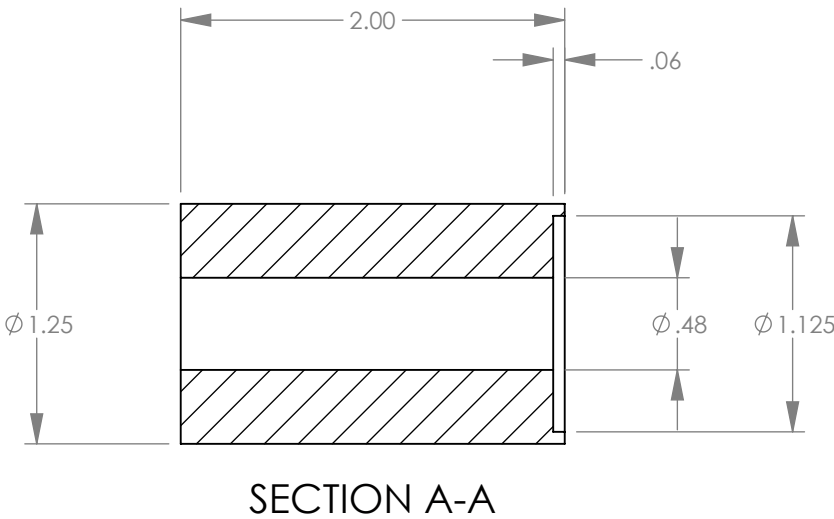


SECTION A-A



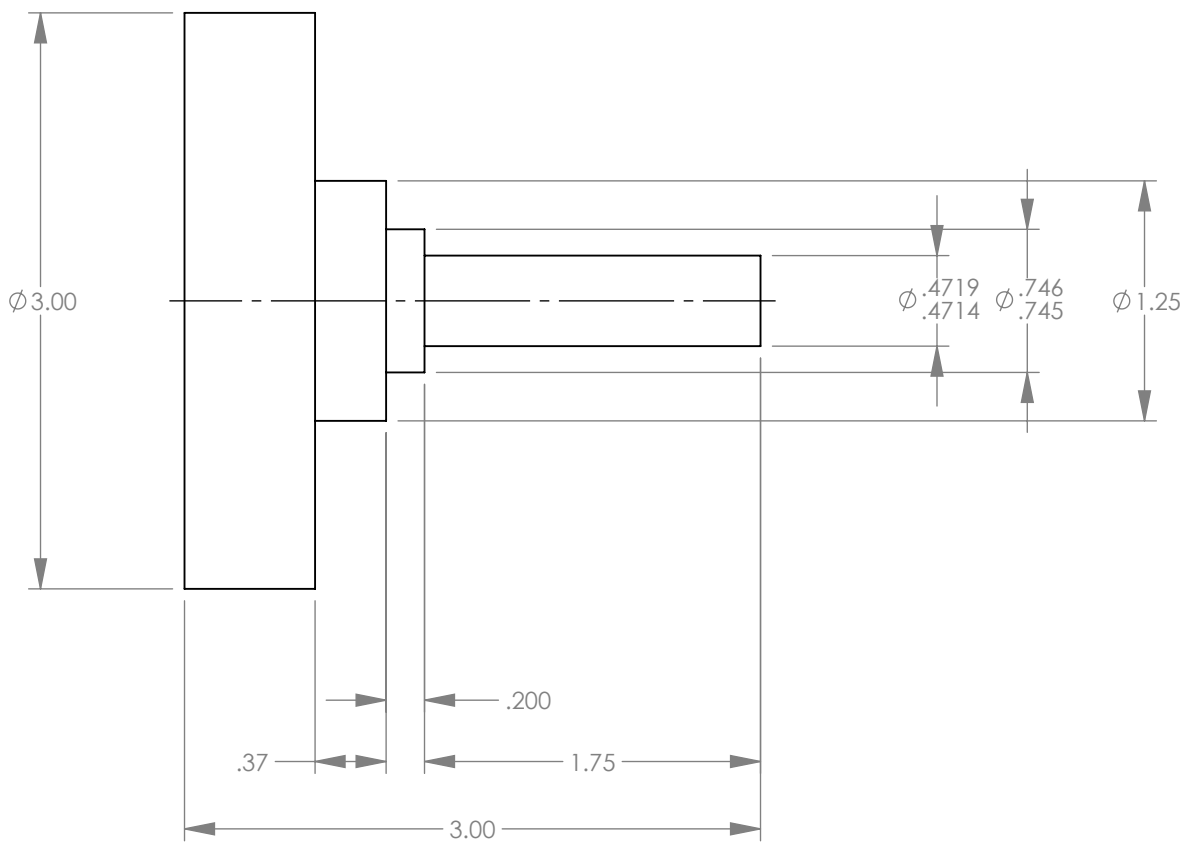
- NOTES:**
1. MAKE FROM 810139.
 2. DEBURR ALL SHARP EDGES.

REVISIONS				CONFIDENTIAL - Copyright Altronic, LLC All rights reserved. May not be copied in whole or in part without prior written permission from Altronic, LLC.	TOLERANCES (EXCEPT AS NOTED)	Altronic		Drawn in Solidworks
REV	DATE	BY	DESCRIPTION		DECIMAL:	TITLE		
1	1-23-18	WTP	ECN 180011; REDRAWN IN SOLIDWORKS		.xxx = ±.005 .xx = ±.010	MAGNET-ROTOR TOOL ALTRONIC V		
					SCALE:	DRAWN BY	WTP	DATE
					1:1	CHECKED BY		DATE
						APPROVED BY		DATE
						DRAWING NUMBER		
						506 102C		



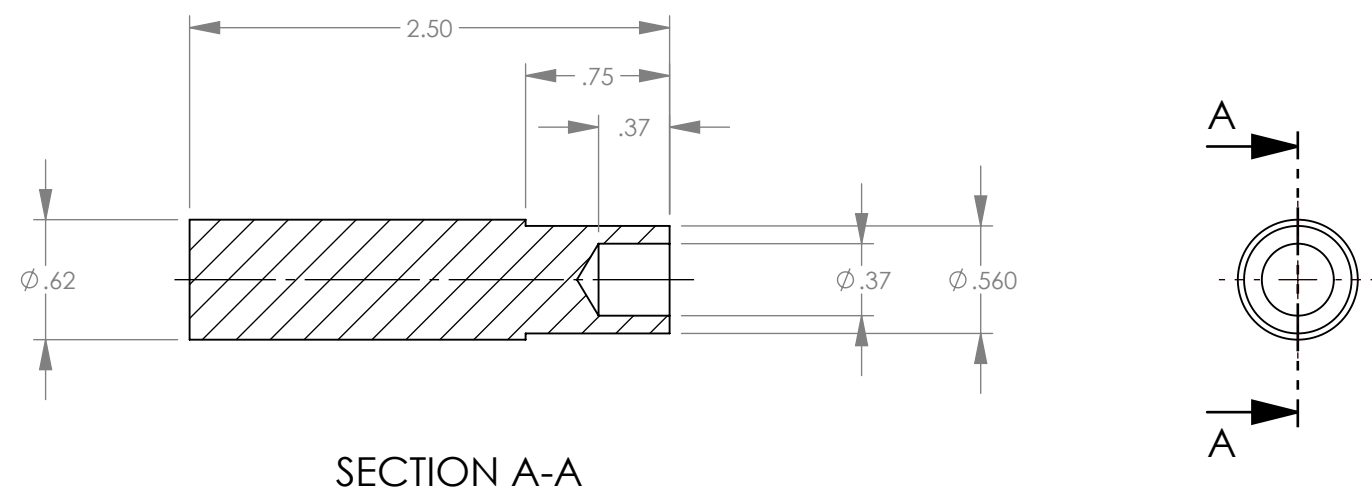
- NOTES:**
- 1. MAKE FROM: 810074.
 - 2. DEBURR ALL SHARP EDGES.

REVISIONS				CONFIDENTIAL - Copyright Altronic, LLC All rights reserved. May not be copied in whole or in part without prior written permission from Altronic, LLC.	TOLERANCES (EXCEPT AS NOTED)		Altronic		Drawn in Solidworks			
REV	DATE	BY	DESCRIPTION		DECIMAL:		TITLE					
1	10-13-17	WTP	ECN 170099		.xxx = ±.005 .xx = ±.010		DISTRIBUTOR BEARING TOOL (ALTRONIC V)					
					SCALE:		DRAWN BY		WTP	DATE	9-10-86	DRAWING NUMBER
					1:1		CHECKED BY			DATE		506 103A
							APPROVED BY			DATE		



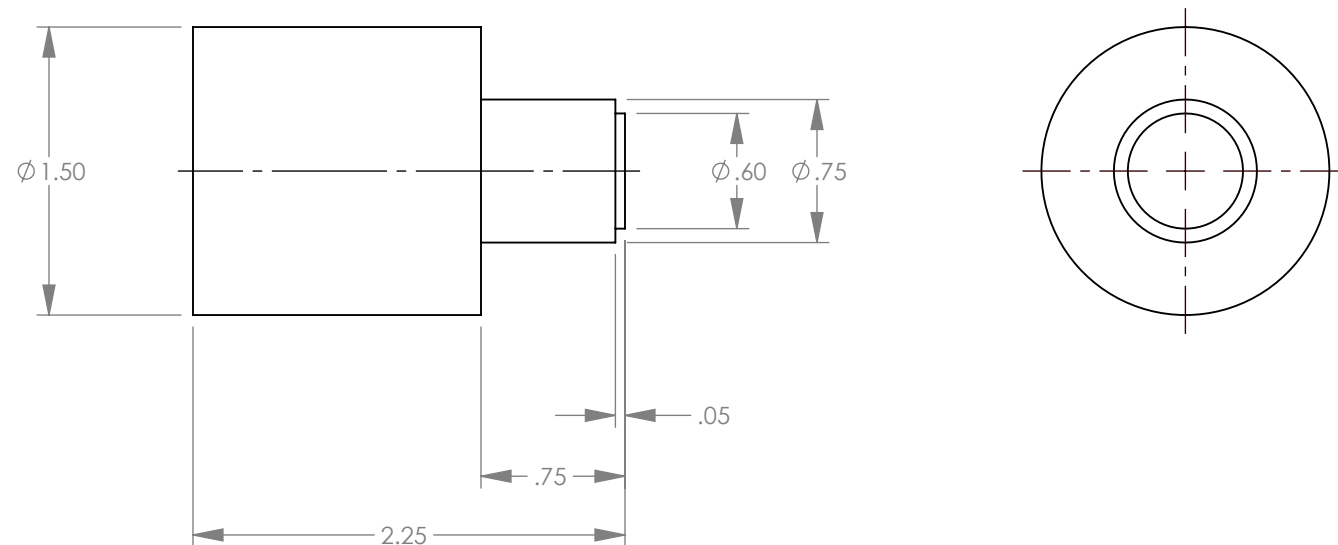
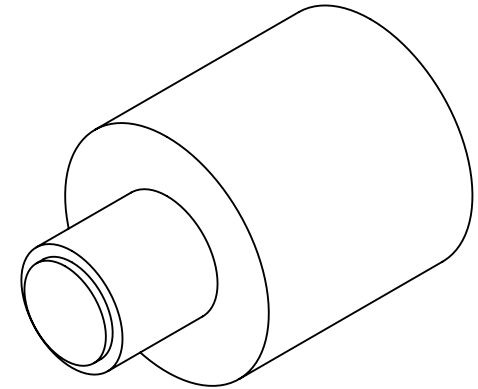
- NOTES:**
- 1. MAKE FROM: 810138.
 - 2. DEBURR ALL SHARP EDGES.

REVISIONS				CONFIDENTIAL - Copyright Altronic, LLC All rights reserved. May not be copied in whole or in part without prior written permission from Altronic, LLC.	TOLERANCES (EXCEPT AS NOTED)		Altronic		Drawn in Solidworks			
REV	DATE	BY	DESCRIPTION		DECIMAL: .xxx = ±.005 .xx = ±.010		TITLE COVER SUPPORT TOOL (ALTRONIC V)					
1	10-12-17	WTP	ECN 170099				DRAWN BY		WTP	DATE	8-8-86	DRAWING NUMBER
							CHECKED BY			DATE		506 103B
							APPROVED BY			DATE		



- NOTES:**
- 1. MAKE FROM: 810140.
 - 2. DEBURR ALL SHARP EDGES.
 - 3. ALTRONIC III: PRESS ROTOR SHAFT INTO BEARING.
ALTRONIC V: PRESS SHAFT INTO COVER BEARING.

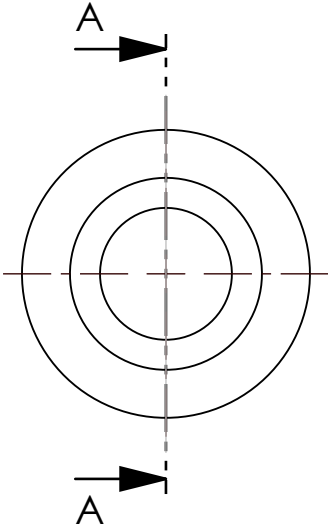
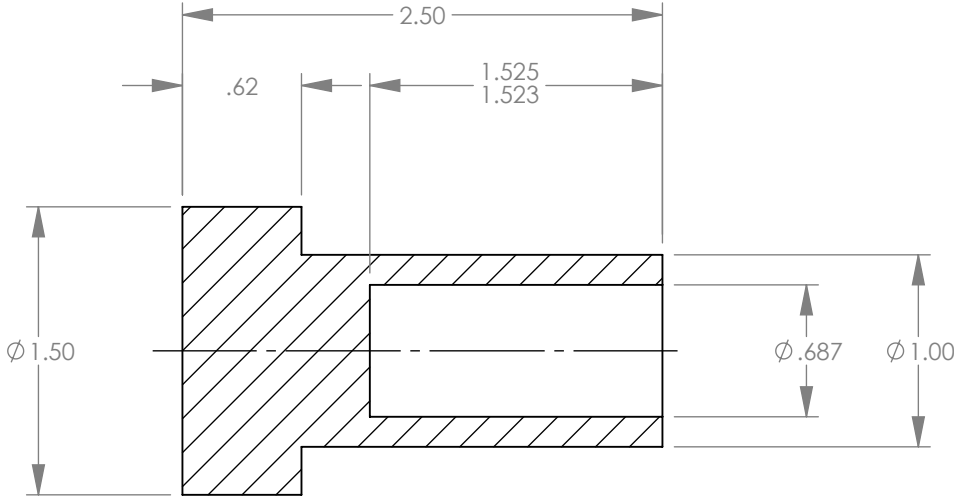
REVISIONS				CONFIDENTIAL - Copyright Altronic, LLC All rights reserved. May not be copied in whole or in part without prior written permission from Altronic, LLC.	TOLERANCES (EXCEPT AS NOTED)	Altronic		Drawn in Solidworks
REV	DATE	BY	DESCRIPTION		DECIMAL:	TITLE		
1	11-7-17	WTP	ECN 170099		.xxx = ±.005 .xx = ±.010	SHAFT TOOL (ALTRONIC III, V)		
2	1-19-18	WTP	ECN 180002		SCALE:	DRAWN BY	WTP	DATE
					1:1	CHECKED BY	DATE	DRAWING NUMBER
						APPROVED BY	DATE	506 104A



NOTES:

1. MAKE FROM 810139.
2. DEBURR ALL SHARP EDGES.

REVISIONS				CONFIDENTIAL - Copyright Altronic, LLC All rights reserved. May not be copied in whole or in part without prior written permission from Altronic, LLC.	TOLERANCES (EXCEPT AS NOTED)		Altronic		Drawn in Solidworks			
REV	DATE	BY	DESCRIPTION		DECIMAL: .xxx = ±.005 .xx = ±.010		TITLE COVER BEARING SUPPORT TOOL ALTRONIC V					
1	1-23-18	WTP	ECN 180011; REDRAWN IN SOLIDWORKS				DRAWN BY		WTP	DATE	9-10-86	DRAWING NUMBER
							CHECKED BY		DATE			506 104B
							APPROVED BY		DATE			

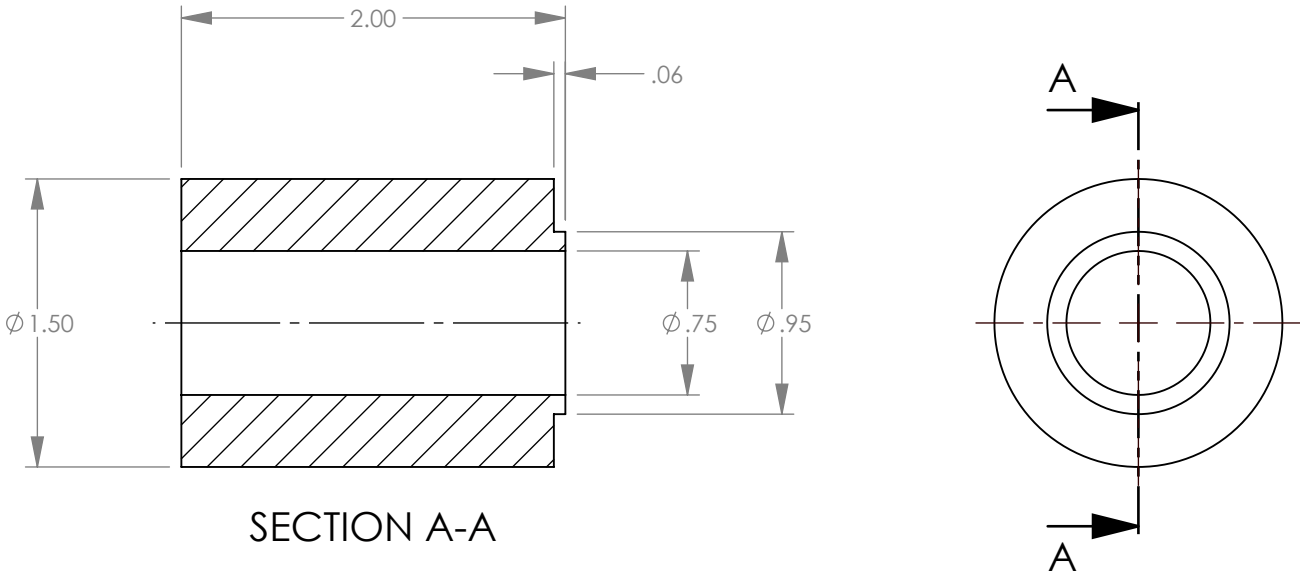


SECTION A-A

NOTES:

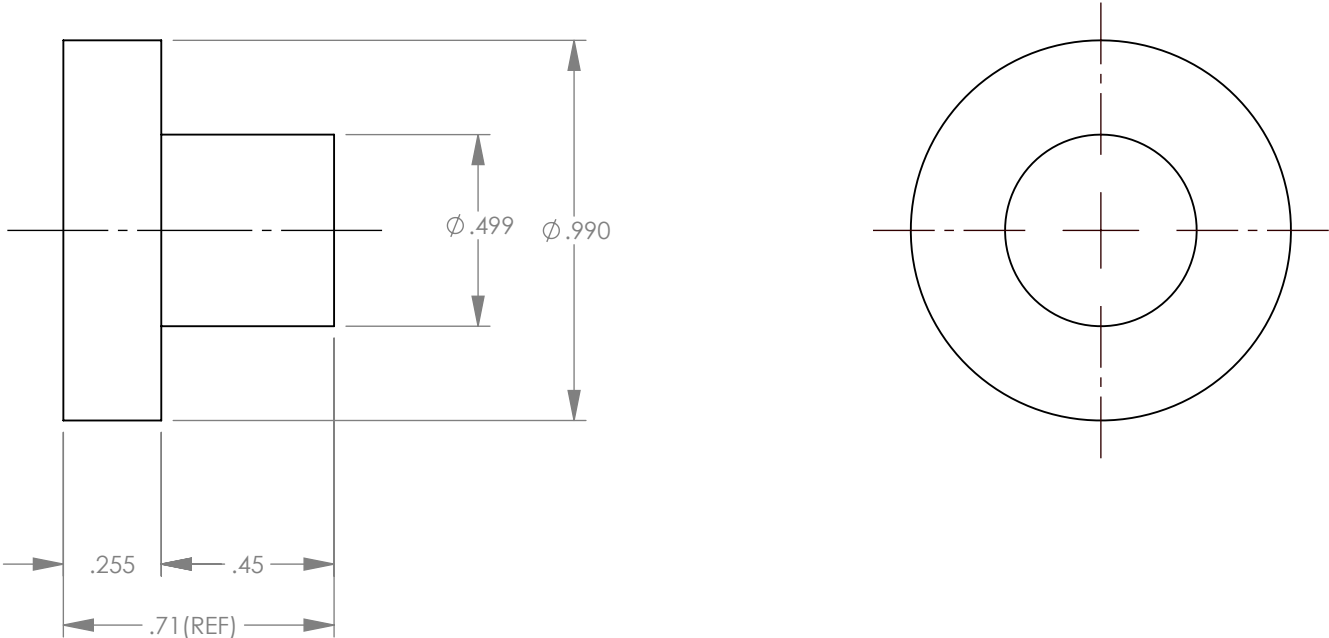
1. MAKE FROM: 810139.
2. DEBURR ALL SHARP EDGES.

REVISIONS				CONFIDENTIAL - Copyright Altronic, LLC All rights reserved. May not be copied in whole or in part without prior written permission from Altronic, LLC.	TOLERANCES (EXCEPT AS NOTED)		Altronic		Drawn in Solidworks		
REV	DATE	BY	DESCRIPTION		DECIMAL: .xxx = ±.005 .xx = ±.010		TITLE SUPPORT FRONT HOUSING BEARING TOOL (ALTRONIC III)				
1	11-7-17	WTP	ECN 170099		DRAWN BY WTP		DATE 9-9-86		DRAWING NUMBER		
2	1-19-18	WTP	ECN 180002		CHECKED BY		DATE		506 104C		
					APPROVED BY		DATE				
					SCALE: 1:1						



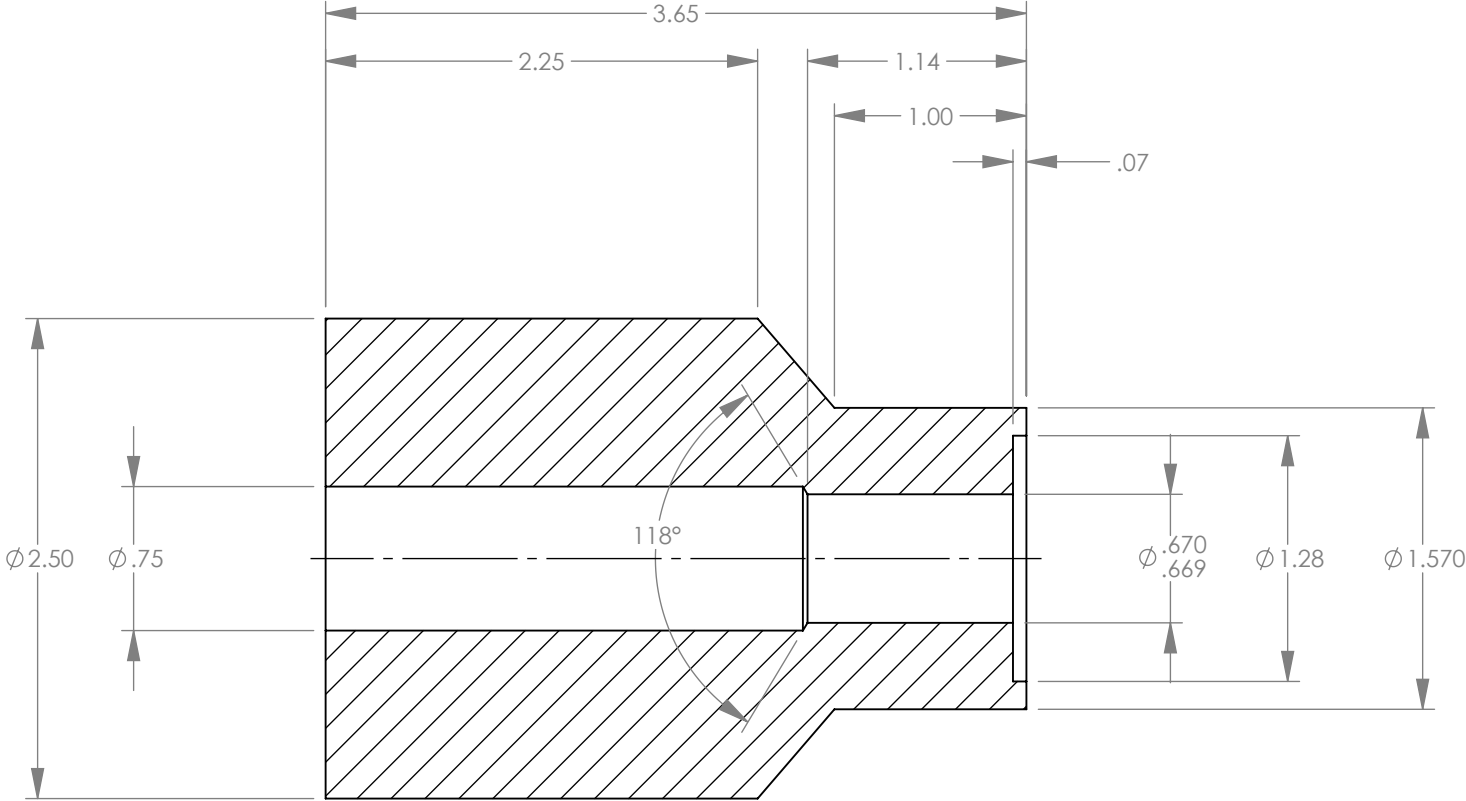
- NOTES:**
- 1. MAKE FROM: 810139.
 - 2. DEBURR ALL SHARP EDGES.
 - 3. ALTRONIC II & III: PRESS GEAR-END BEARING ON SHAFT.
ALTRONIC III: PRESS GEAR BUSHING ON SHAFT.

REVISIONS				CONFIDENTIAL - Copyright Altronic, LLC All rights reserved. May not be copied in whole or in part without prior written permission from Altronic, LLC.	TOLERANCES (EXCEPT AS NOTED)		Altronic		Drawn in Solidworks			
REV	DATE	BY	DESCRIPTION		DECIMAL: .xxx = ±.005 .xx = ±.010		TITLE PRESS GEAR-END BEARING/ GEAR BUSHING ON SHAFT TOOL (ALTRONIC II & III)					
1	10-12-17	WTP	ECN 170099				DRAWN BY		DEB	DATE	9-9-86	DRAWING NUMBER 506 104D
							CHECKED BY		DATE			
							APPROVED BY		DATE			

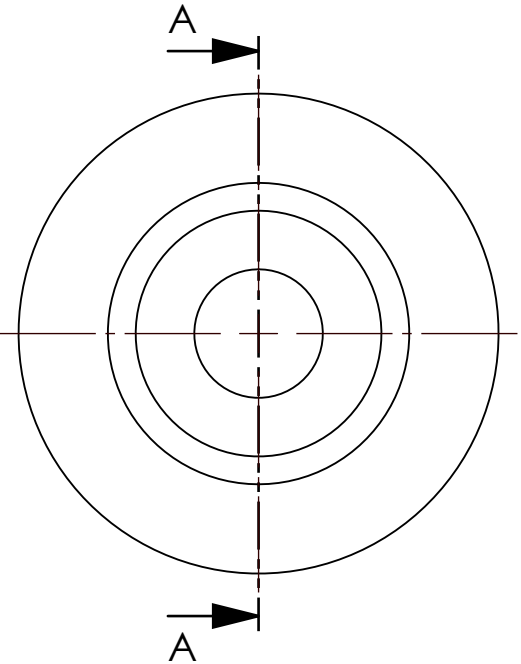


- NOTES:**
- 1. MAKE FROM: 810141.
 - 2. DEBURR ALL SHARP EDGES.
 - 3. INSERT FIG. 2 ($\phi .499$) INTO FIG. 1 ($\phi .500$) TO COMPLETE SHAFT SUPPORT FIXTURE.

REVISIONS				CONFIDENTIAL - Copyright Altronic, LLC All rights reserved. May not be copied in whole or in part without prior written permission from Altronic, LLC.	TOLERANCES (EXCEPT AS NOTED)		Altronic		Drawn in Solidworks			
REV	DATE	BY	DESCRIPTION		DECIMAL:		TITLE					
1	10-12-17	WTP	ECN 170099		.xxx = ±.005 .xx = ±.010		SUPPORT BEARING-SHAFT (ALTRONIC III)					
					SCALE:		DRAWN BY		WTP	DATE	9-9-86	DRAWING NUMBER
					1:1		CHECKED BY			DATE		506 104E
							APPROVED BY			DATE		

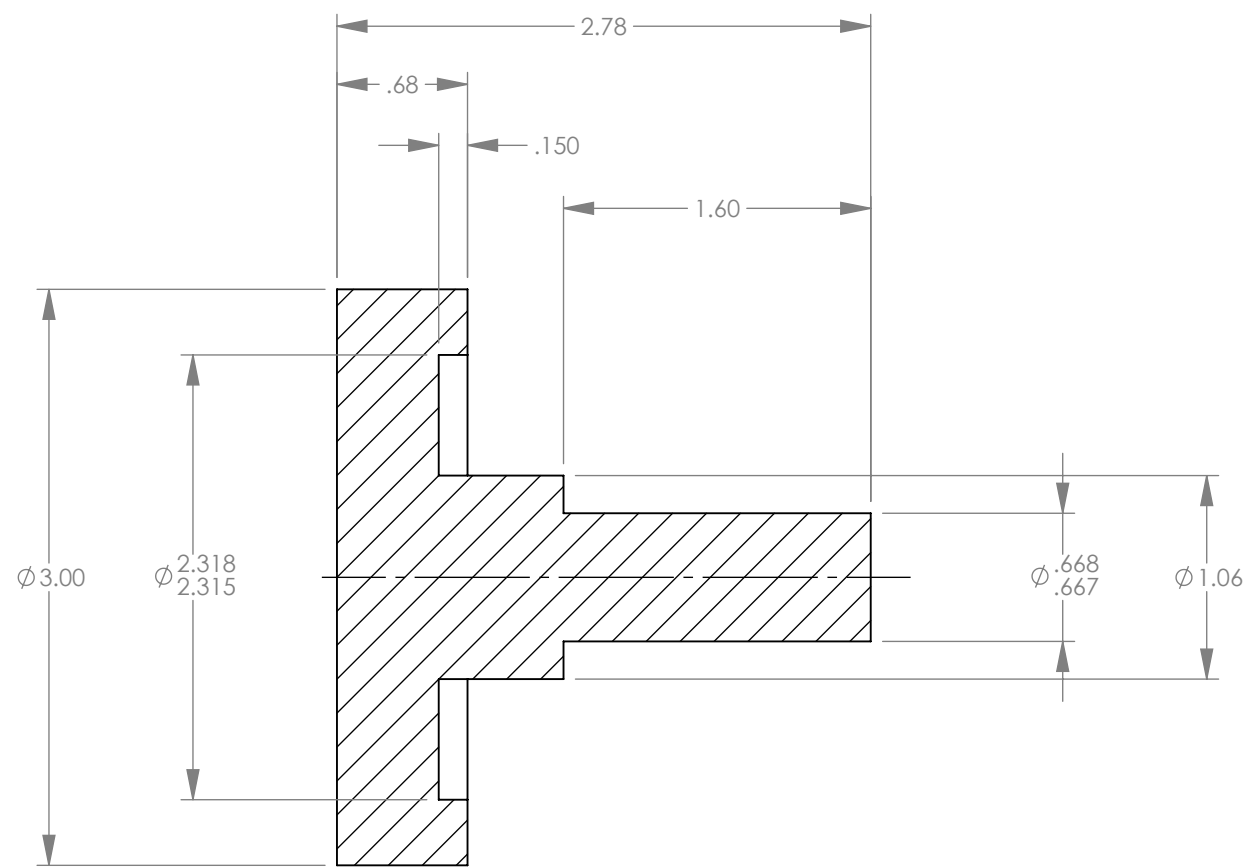


SECTION A-A
SCALE 1 : 1

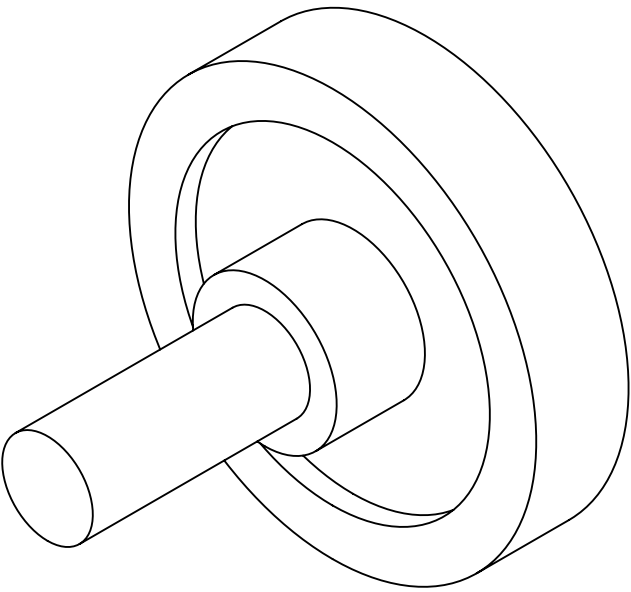
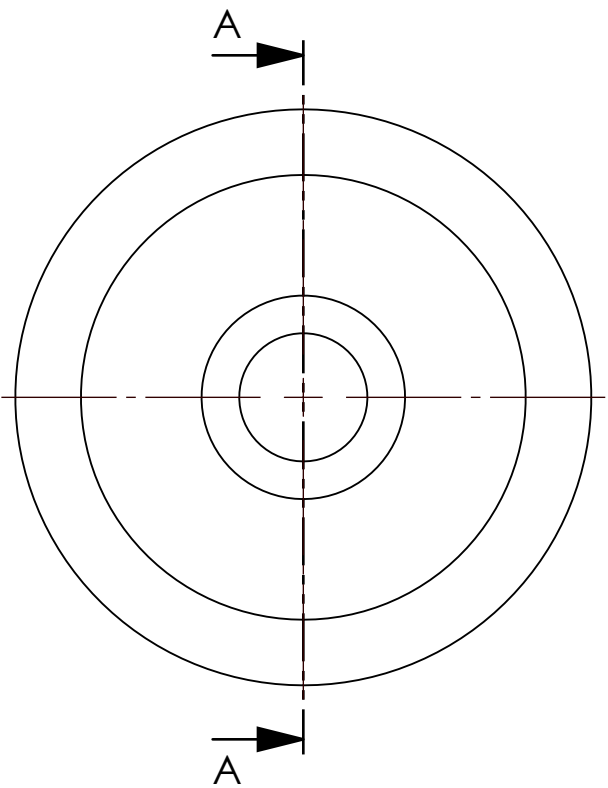


- NOTES:**
- 1. MAKE FROM: 810072.
 - 2. DEBURR ALL SHARP EDGES.

REVISIONS				CONFIDENTIAL - Copyright Altronic, LLC All rights reserved. May not be copied in whole or in part without prior written permission from Altronic, LLC.	TOLERANCES (EXCEPT AS NOTED)		Altronic		Drawn in Solidworks			
REV	DATE	BY	DESCRIPTION		DECIMAL: .xxx = ±.005 .xx = ±.010		TITLE PRESS BEARING INTO FRONT HOUSING TOOL (ALTRONIC III)					
1	2-12-97	WTP	ECN 970011		SCALE: 1:1		DRAWN BY DEB		DATE 9-9-86		DRAWING NUMBER	
2	10-13-17	WTP	ECN 170099				CHECKED BY		DATE		506 105A	
							APPROVED BY		DATE			

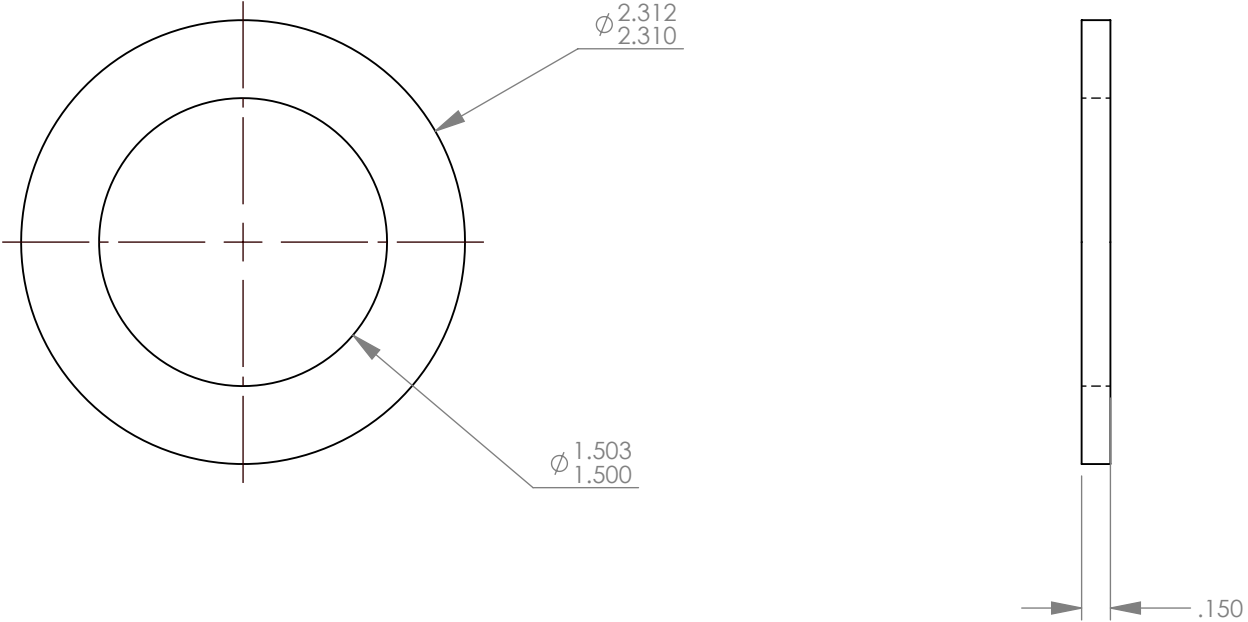


SECTION A-A



- NOTES:**
- 1. MAKE FROM 810138 + 810072.
 - 2. DEBURR ALL SHARP EDGES.

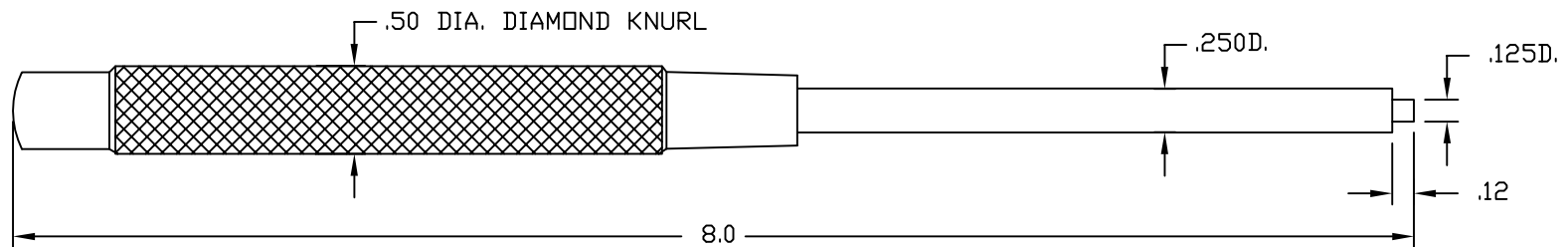
REVISIONS				CONFIDENTIAL - Copyright Altronic, LLC All rights reserved. May not be copied in whole or in part without prior written permission from Altronic, LLC.	TOLERANCES (EXCEPT AS NOTED)		Altronic		Drawn in Solidworks			
REV	DATE	BY	DESCRIPTION		DECIMAL:		TITLE					
1	10-9-17	WTP	ECN 170099		.xxx = ±.005 .xx = ±.010		SUPPORT FRONT HOUSING TOOL (ALTRONIC III)					
					SCALE:		DRAWN BY		DEB	DATE	9-9-86	DRAWING NUMBER
					1:1		CHECKED BY			DATE		506 105B
							APPROVED BY			DATE		



NOTES:

- 1. MAKE FROM 810138 + 810072.
- 2. DEBURR ALL SHARP EDGES.

REVISIONS				CONFIDENTIAL - Copyright Altronic, LLC All rights reserved. May not be copied in whole or in part without prior written permission from Altronic, LLC.	TOLERANCES (EXCEPT AS NOTED)	Altronic		Drawn in Solidworks
REV	DATE	BY	DESCRIPTION		DECIMAL: .xxx = ±.005 .xx = ±.010	TITLE SUPPORT RING TOOL (ALTRONIC III)		
1	10-9-17	WTP	ECN 170099		SCALE: 1:1	DRAWN BY DEB	DATE 9-9-86	DRAWING NUMBER
						CHECKED BY	DATE	506 105B
						APPROVED BY	DATE	

DRIVE PIN ON AND OFF

MADE FROM - 615 635

REVISIONS				TOLERANCES (EXCEPT AS NOTED)	ALTRONIC INC.		
NO.	DATE	BY	DESCRIPTION	DECIMAL .XXX - ± 0.005 .XX - ± 0.010	TITLE DRIVE PIN ON AND OFF TOOL		
1	02-06-18	GET	ECN 180014	FRACTIONAL	DRAWN BY	DEB	SCALE FULL
2				MATERIAL	CHECKED BY	DATE	9-10-86
3					APPROVED BY		PART NUMBER
4							506 108A
5							