

Manufacturing Company

APPLICATION:

Agricultural Fertilizer Plant,
Ammonia Compressor

ENGINE:

Electric Motor Driven Cooper
J-M6 Frame

LOCATION:

Midwest

ALTRONIC PRODUCTS:

VSM 8-Channel

DISTRIBUTOR:

Exline, Inc.

Installation:

Lester Wheeler, Exline

DATE:

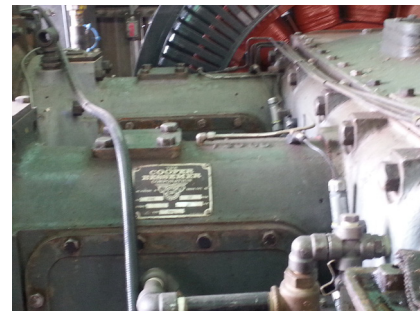
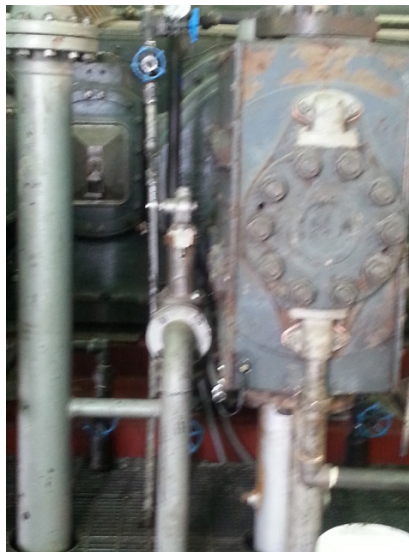
September 10, 2014

OVERVIEW:

This manufacturing company's insurance carrier, due to the increased risk to the operation, stipulated the installation of vibration monitoring and control equipment to protect their operation from catastrophic damage. The Altronic Vibration Sensing Monitor (VSM) was chosen for this application because it offered high reliability and low cost.

Exline set up the unit channels using the custom label process. The company's contractor—who also set up and currently operates the plant's Delta "V" system—monitored the units to obtain the baseline vibration reference levels. To finalize the commissioning process, the manufacturer determined and entered the set up values for alarms, shutdown, bad sensor, etc.

The compressor configuration was surveyed by the Exline I and A Division group to determine the proper lo-



cation for the sensors. They mounted the display units under the direction of manufacturing company's operations group. The two Altronic 8-channel VSM units were installed using broadband Piezoelectric vibration sensors.